



ORACLE®



Essbase 11.1.1.0 Preview



Agenda

- Oracle's EPM 11 Release Strategy
- Beta Program Changes
- Plan of Activities
- Release overview
 - Installation changes
 - Essbase
 - Studio
 - EAS, EIS
 - Smart View (relevant for Essbase features)
- Questions / Feedback



Oracle's EPM 11 Release Strategy

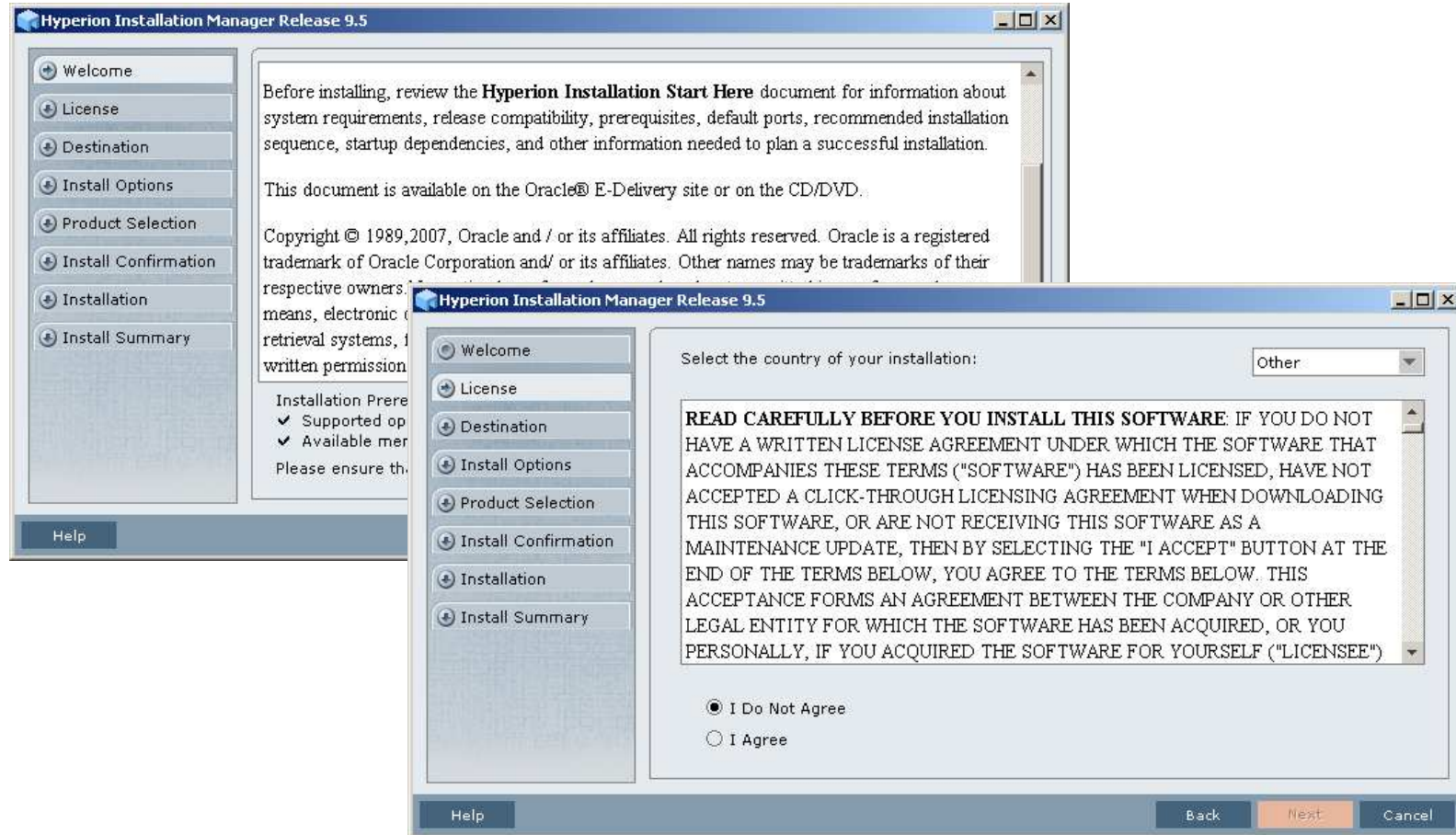
- “Kennedy” release renumbered to 11.1.1.0.0
 - Tentatively Late June, 2008
 - Windows only
- “Shelley” release 11.1.1.1.0
 - All other platforms
 - Minor enhancements
 - Tentatively Q3 CY2008
- “Dickens” release 11.1.1.2.0
 - Localization
 - Tentatively Q4 CY2008



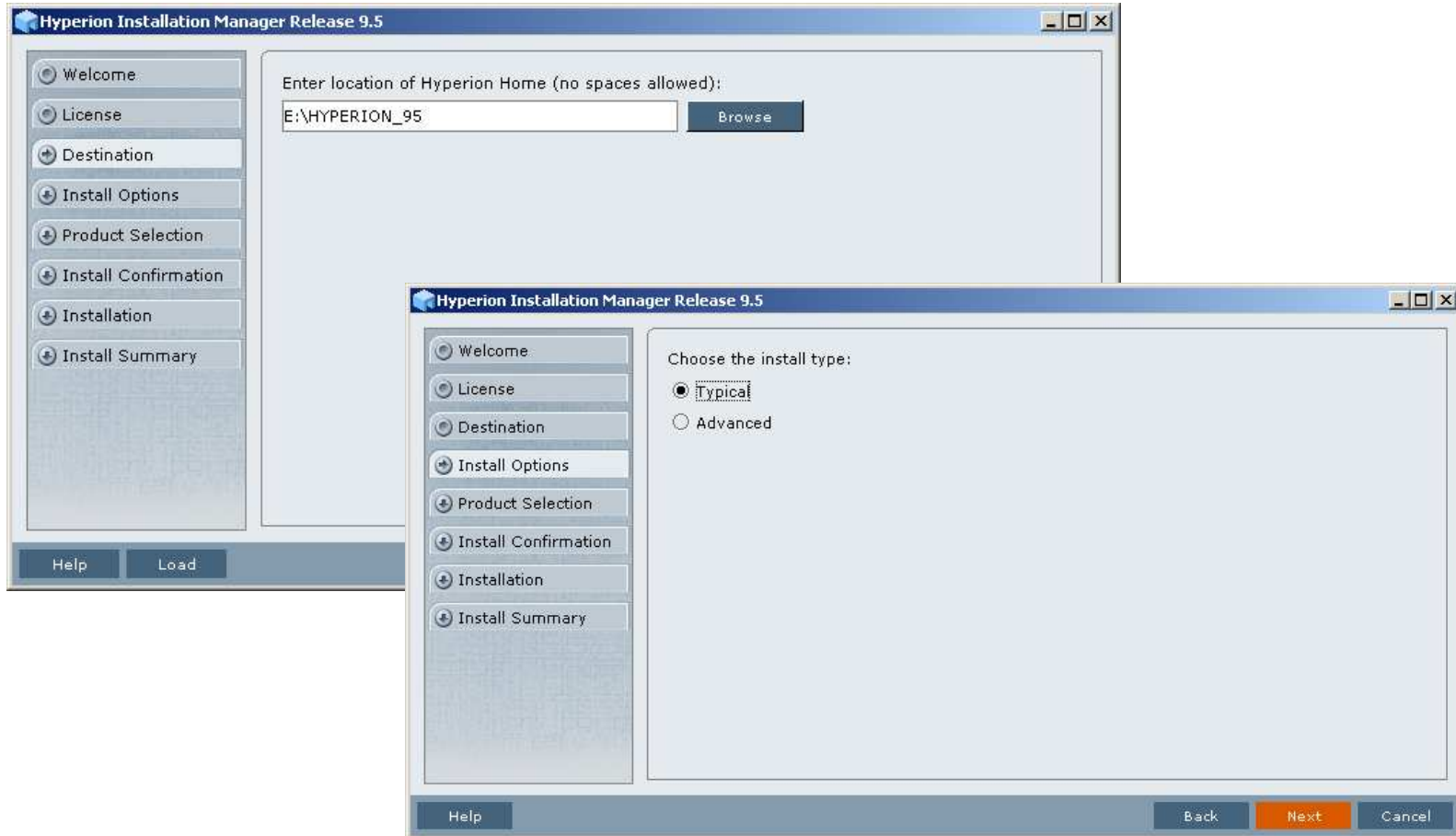
New installer

- New common installer for all products
- Easier to install
 - One installer, 4 main screens
 - Configuration tool
- Change in directory structure

New installer - screens



New installer - screens



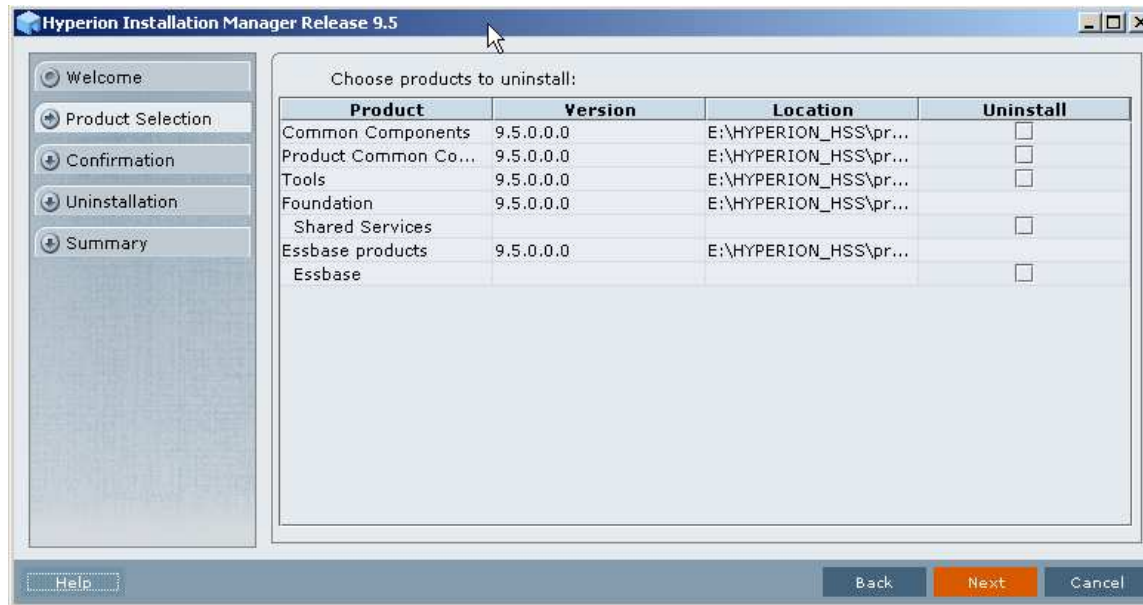
New installer - screens

The top screenshot shows the 'Hyperion Installation Manager Release 9.5' window. The left sidebar contains navigation buttons: Welcome, License, Destination, Install Options, Product Selection (highlighted), Install Confirmation, Installation, and Install Summary. The main area is titled 'Select products to install:' and includes a 'Hide Unavailable Products' link. Below this is a table with columns for 'Products', 'Client', 'Web app', and 'Services'. The table lists various products under categories like Foundation, Shared Services, Workspace, SmartView for Office, EPM Architect, Planning, Financial Management, Strategic Finance, and Essbase products. The bottom screenshot shows the 'Hyperion Installation Manager Release 9.5' window at the 'Installation' step. The left sidebar is the same as the top screenshot. The main area displays 'Hyperion Home: D:\HYPERION_95' and a table of installed components. Below the table, it states 'Installation successful. Click Finish to end the installation or Click Configure to configure the product.' The bottom of the window has 'Help', 'Configure', and 'Finish' buttons.

Products	Client	Web app	Services
Foundation			
Shared Services		<input type="checkbox"/> 9.5.0.0.0	
Workspace		<input type="checkbox"/>	<input type="checkbox"/>
SmartView for Office			
EPM Architect	<input type="checkbox"/>	<input type="checkbox"/>	<input type="checkbox"/>
Planning	<input type="checkbox"/>	<input type="checkbox"/>	
Financial Management	<input type="checkbox"/>	<input type="checkbox"/>	<input type="checkbox"/>
Strategic Finance	<input type="checkbox"/>		
Essbase products			
Essbase			
Visual Explorer			

Product/Component	Install Type	Status
✓ Tools		Completed
✓ Common Components		Completed
✓ Essbase		Completed
✓ Essbase Administration Services Client	Install	Completed
✓ Essbase Design Studio Client	Install	Completed
✓ Essbase Services Client	Install	Completed

New installer - uninstalling





New installer - directories

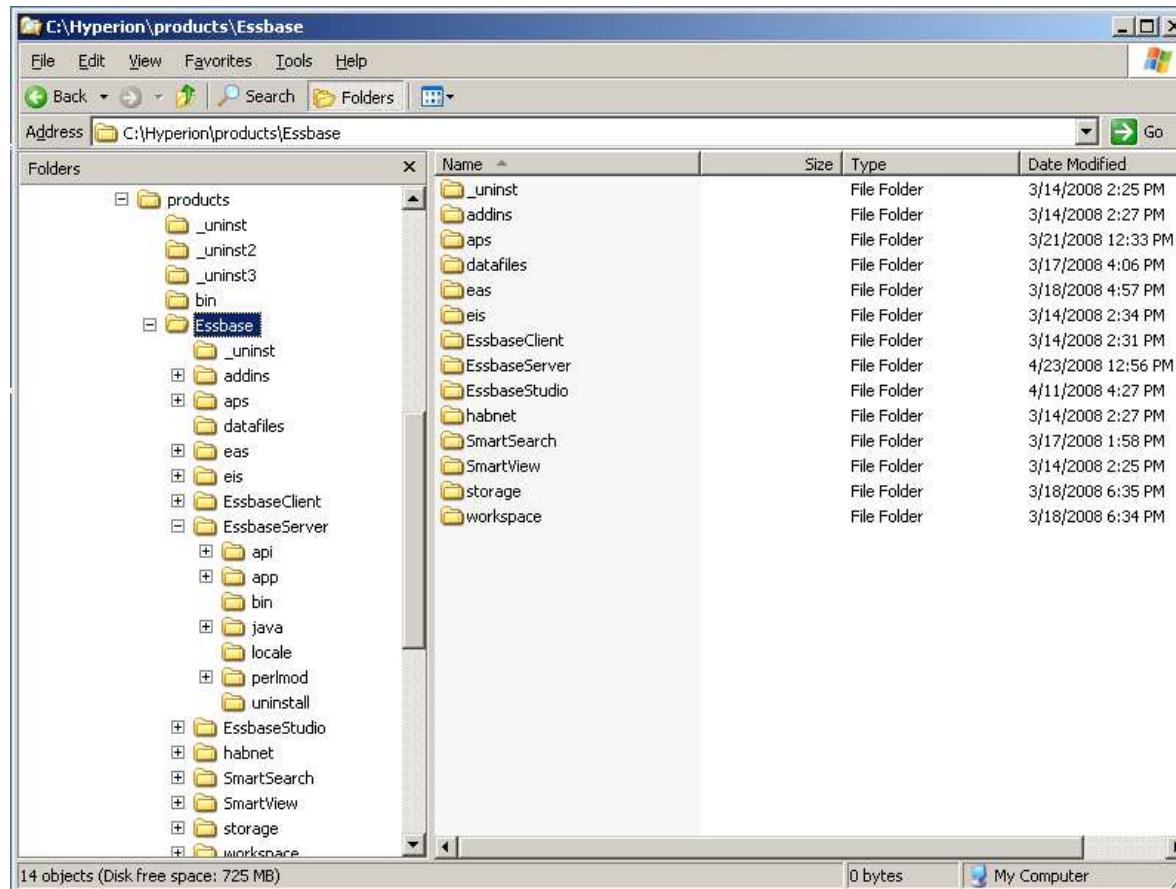
- Single HYPERION_HOME
 - No HYPERION_HOME for common files
 - No HYPERION_HOME for each product
- Products are installed under HYPERION_HOME\products
- Web apps auto deployed are under HYPERION_HOME\deployments
- Essbase uses a new variable ESSBASEPATH



New installer - environment variables

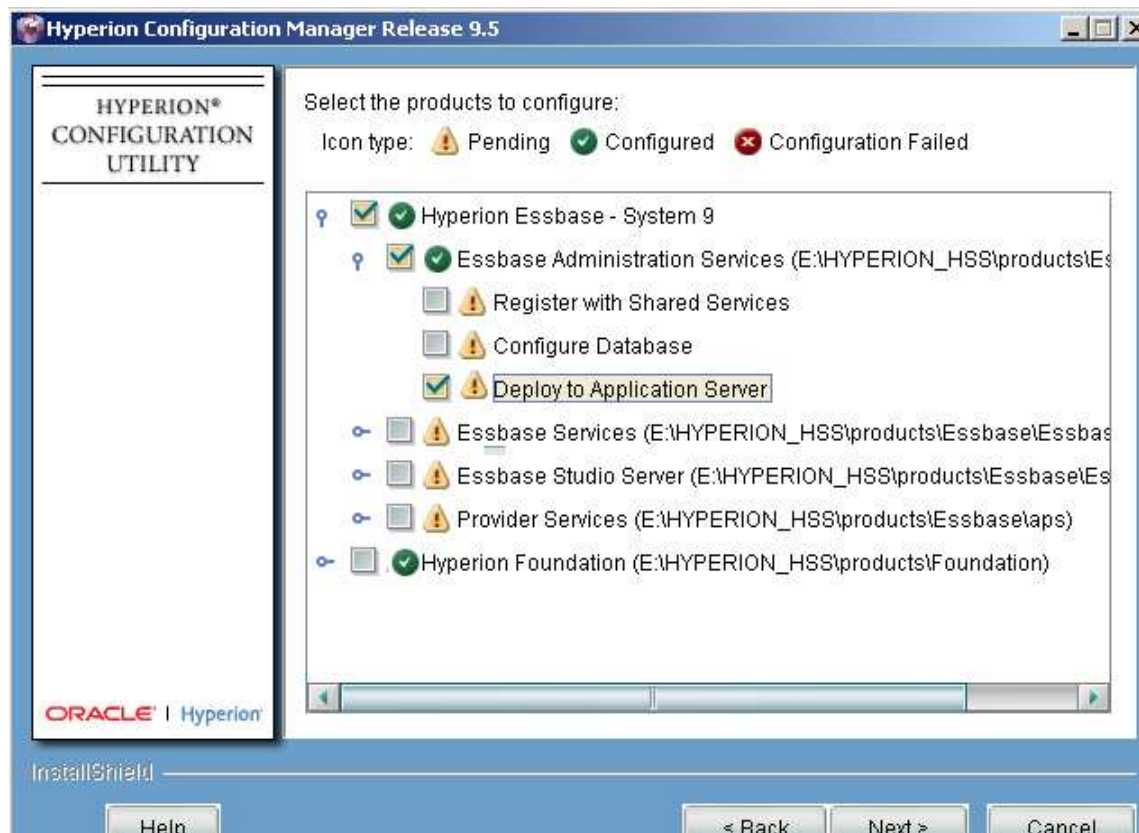
- APS_HOME=C:\Hyperion\products\Essbase\aps
- ARBORPATH=C:\Hyperion\products\Essbase\EssbaseServer
- EAS_HOME=C:\Hyperion\products\Essbase\eas\server
- **ESSBASEPATH=C:\Hyperion\products\Essbase\EssbaseServer**
- ESSLANG=English_UnitedStates.Latin1 @Binary
- HABNET_HOME=C:\Hyperion\products\Essbase\habnet
- **HYPERION_HOME=C:\Hyperion**
- ISHOME=C:\Hyperion\products\Essbase\eis
- ISLOADINFO=C:\Hyperion\products\Essbase\eis\loadinfo
- SMARTSEARCH_HOME=C:\Hyperion\products\Essbase\SmartSearch

New installer - directories





Configuration Tool





Essbase Product Suite

- Essbase Server
- Essbase Administration Services
- Hyperion Provider Services
- Essbase Integration Services (no new features)
- Essbase Spreadsheet Add-in (Classic)
- Essbase Studio (NEW!)



Essbase New Features

- Varying Attributes (Slowly Changing Attributes)
- Text/date Measures (aka Text lists)
- Backup, transaction logging and replay
- ASO features
 - Partial Data Clear
 - Target of a partition
 - Write-back to level 0 (9.3.1)
- New Time intelligence, Calc script and MDX functions
- XOLAP (Relational Access)



Essbase New Features - continued

- Shared Services
 - Default to use CSS authentication
 - Native Security still available
- Life Cycle Management



Varying Attributes (aka Slowly Changing Attributes)

- Varying attributes feature enables you to:
- Store data for situations where attributes can change, such as
 - Employee hierarchy - over time
 - Product packaging - over different markets
- Analyze data based on perspectives
 - Historical data – reflect the actual changes
 - Point-in-time – as how the hierarchy was a certain point

Varying Attributes - Perspectives

- Reality perspective

Manager	Category	Months											
		Jan	Feb	Mar	Apr	May	Jun	Jul	Aug	Sep	Oct	Nov	Dec
Vlad	Colas	8,314	8,327	8,407	8,685	8,265	8,172	7,595	7,478	6,849	7,303	8,220	8,772
	Root Beer	8,716	8,960	8,951	8,969	9,071							
	Cream Soda							9,318	9,163	8,169	8,276	8,157	8,589
Igor	Root Beer						9,361	9,463	9,538	8,941	9,192	8,942	8,982
	Cream Soda	7,874	8,046	8,077	8,367	8,517	8,852						
	Fruit Soda	6,634	6,736	6,778	6,896	7,141	7,318	7,440	7,520	7,119	6,997	6,652	6,999

- March perspective

Manager	Category	Months											
		Jan	Feb	Mar	Apr	May	Jun	Jul	Aug	Sep	Oct	Nov	Dec
Vlad	Colas	8,314	8,327	8,407	8,685	8,265	8,172	7,595	7,478	6,849	7,303	8,220	8,772
	Root Beer	8,716	8,960	8,951	8,969	9,071	9,361	9,463	9,538	8,941	9,192	8,942	8,982
Igor	Cream Soda	7,874	8,046	8,077	8,367	8,517	8,852	9,318	9,163	8,169	8,276	8,157	8,589
	Fruit Soda	6,634	6,736	6,778	6,896	7,141	7,318	7,440	7,520	7,119	6,997	6,652	6,999

- July perspective

Manager	Category	Months											
		Jan	Feb	Mar	Apr	May	Jun	Jul	Aug	Sep	Oct	Nov	Dec
Vlad	Colas	8,314	8,327	8,407	8,685	8,265	8,172	7,595	7,478	6,849	7,303	8,220	8,772
	Cream Soda	7,874	8,046	8,077	8,367	8,517	8,852	9,318	9,163	8,169	8,276	8,157	8,589
Igor	Root Beer	8,716	8,960	8,951	8,969	9,071	9,361	9,463	9,538	8,941	9,192	8,942	8,982
	Fruit Soda	6,634	6,736	6,778	6,896	7,141	7,318	7,440	7,520	7,119	6,997	6,652	6,999

Text and date measures

- Use text and dates as measures in multidimensional reporting
- Perform analysis based on text or date measures
- New types of reports and analysis

	A	B	C	D	E	F	G	H	I
1		Jan 2006				Feb 2006			
2		SalesRank	Sales	Satisfaction	Transaction date	SalesRank	Sales	Satisfaction	Transaction date
3	1. Daria Zalack	5	385	Satisfied	1/7/2006	9	894	Satisfied	2/13/2006
4	2. Garey Bennett	2	2709	Satisfied	1/20/2006	5	3274	Rather satisfied	2/11/2006
5	3. Brady Sell	9	264	Rather dissatisfied	1/6/2006	8	1337	Satisfied	2/17/2006
6	4. Tammie Weisgarbe	6	383	Rather satisfied	1/19/2006	3	3897	Rather satisfied	2/24/2006
7	5. Kian Clark	3	2079	Very dissatisfied	1/6/2006	10	471	Very dissatisfied	2/22/2006
8	6. Harriett Laurenzi	7	349	Rather satisfied	1/12/2006	4	3842	Rather satisfied	2/3/2006
9	7. Aaliyah Shaffer	10	223	Rather satisfied	1/3/2006	2	4599	Satisfied	2/16/2006
10	8. Kailyn Joyce	1	3808	Satisfied	1/14/2006	6	2217	Dissatisfied	2/23/2006
11	9. Madge Zoucks	8	307	Satisfied	1/17/2006	1	4876	Satisfied	2/12/2006
12		Sales	Package Type	ified	1/16/2006	7	1941	Very satisfied	2/28/2006
	Cola	40013.2	Bottle						
	Diet Cola	12640.6	Can						
	Caffeine Free Cola	6281.6	Can						
	Colas	58935.4	Bottle						
			Can						
			Invalid						
				Sales Program Intro Date	Sales Program Term Date	Deviation from Average Life Span			
			All Merchandise	October 22, 2004	December 16, 2004	-22			
			Digital Cameras	April 6, 2004	July 25, 2004	-77			
			Camcorders	October 18, 2004	December 31, 2004	-41			
			Photo Printers	September 6, 2004	September 24, 2005	-18			
			Handhelds	June 17, 2005	November 6, 2005	-174			
			Memory	April 6, 2004	November 24, 2005	-27			
			Other Accessories	May 13, 2005	February 24, 2006	-174			
			Boomboxes	May 2, 2006	March 23, 2006	-174			
			Radios	June 24, 2006	May 12, 2006	-23			
			Direct View	December 23, 2005	June 4, 2006	28			
					August 1, 2006	28			
					March 5, 2006	-38			

Text and date measures

- Customer list
- Sales is a numeric measure
- Satisfaction is a text measure
- Transaction date is a date

	A	B	C	D	E
1			Jan 2006		
2		SalesRank	Sales	Satisfaction	Transaction date
3	1. Daria Zalack	5	385	Satisfied	1/7/2006
4	2. Garey Bennett	2	2709	Satisfied	1/20/2006
5	3. Brady Sell	9	264	Rather dissatisfied	1/6/2006
6	4. Tammie Weisgarbe	6	383	Rather satisfied	1/19/2006
7	5. Kian Clark	3	2079	Very dissatisfied	1/6/2006
8	6. Harriett Laurenzi	7	349	Rather satisfied	1/12/2006
9	7. Aaliyah Shaffer	10	223	Rather satisfied	1/3/2006
10	8. Kailyn Joyce	1	3808	Satisfied	1/14/2006
11	9. Madge Zoucks	8	307	Satisfied	1/17/2006
12	10. Christianne Nicola	4	462	Very satisfied	1/16/2006

Text measure analysis

- Because text measures are stored as numbers, you can perform calculate averages and summaries
- Example: Find average Rating for a group of customers
- Group A is average satisfaction for the group

	Sales	Time
		Satisfaction
1. <i>Daria Zalack</i>	385	Satisfied
2. <i>Garey Bennett</i>	2709	Rather dissatisfied
3. <i>Brady Sell</i>	264	Rather satisfied
4. <i>Tammie Weisgarbei</i>	383	Rather satisfied
5. <i>Kian Clark</i>	2079	Very dissatisfied
6. <i>Harriett Laurenzi</i>	349	Rather satisfied
7. <i>Aaliyah Shaffer</i>	223	Rather satisfied
8. <i>Kailyn Joyce</i>	3808	Rather dissatisfied
9. <i>Madge Zoucks</i>	307	Satisfied
10. <i>Christianne Nicola</i>	462	Very satisfied
Group A	10969	Rather satisfied



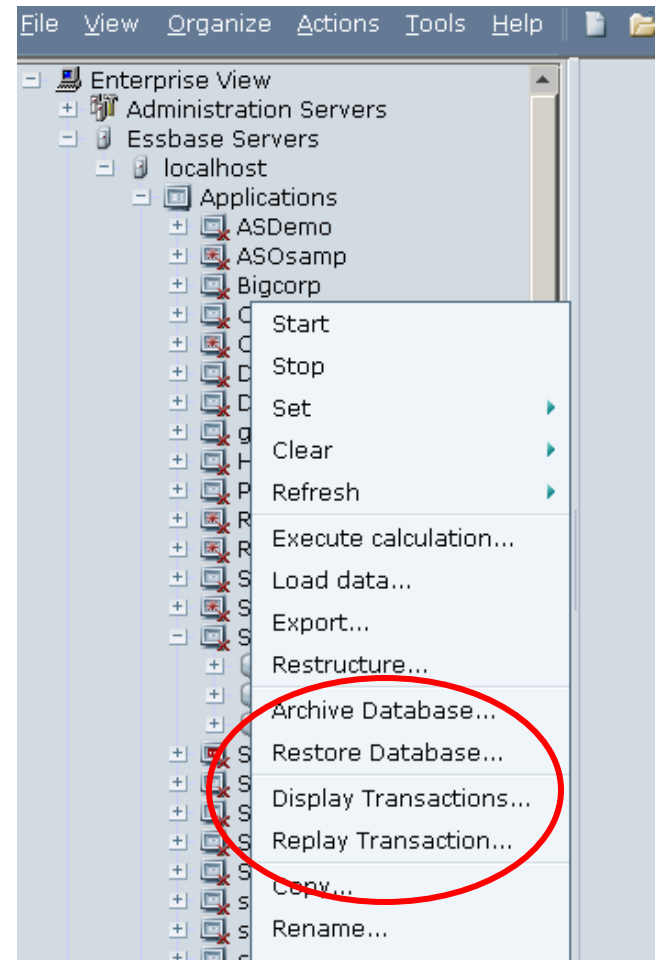
Backup, transaction logging and replay

****BSO Only ****

- Backup/ Restore:
 - Copy the files to a specified location during backup
 - Database in read-only mode during backup
 - Restore from copy at later point. This can be used in conjunction with operational transaction logging and play back capabilities to restore to a previous state.
- Transaction logging & replay
 - Logging: Track write operations to the database.
 - Following events will be logged:
 - Outline changes, data load, calculations, lock and send
 - Replay: Choose which events to replay or replay all. This feature could be used as pseudo data mirroring.

Backup, transaction logging and replay

- Administration Console
- MAXL



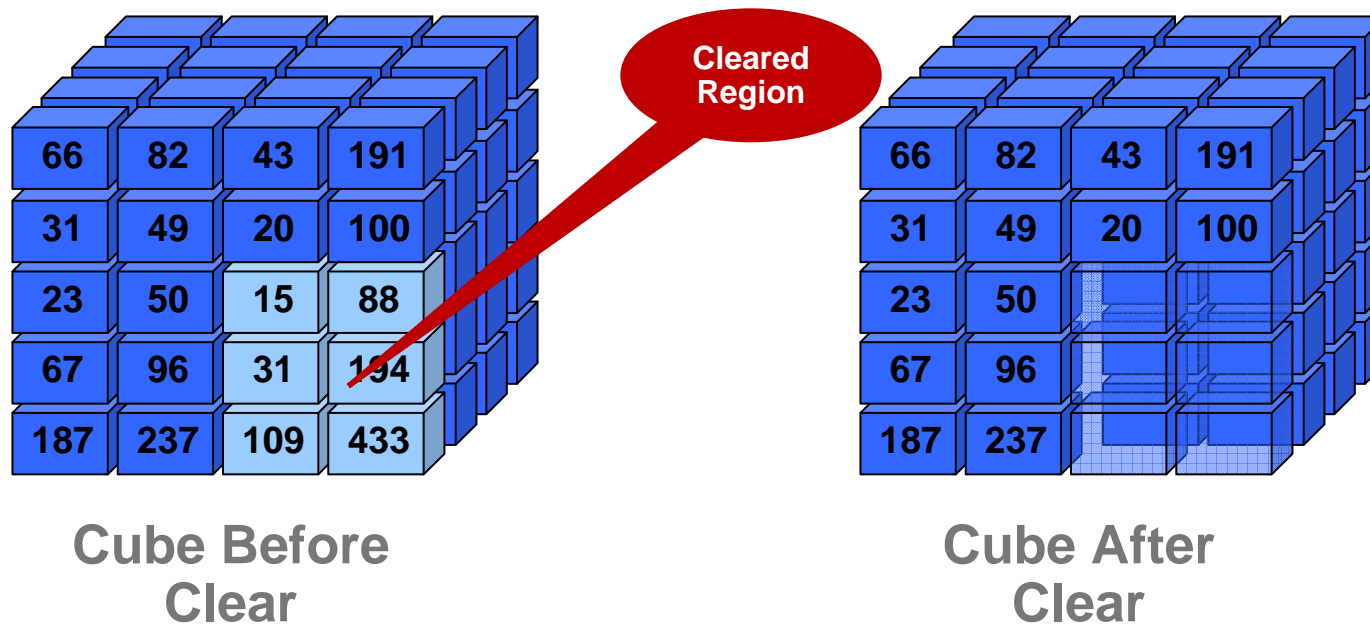


ASO features

- Partial Data Clear
 - Remove data before load (for example last 3 months)
 - Set region of data to 0 or #MISSING with MDX statement
 - Logical or Physical Clear
- Target of partition
 - An ASO cube can be a target of a replicated partition. From a BSO cube data is transferred into an ASO cube.
 - Customer will take care of cube structural maintenance between the source and the target once the replication is done.
- Write-back to level 0
 - Data at upper levels will be ignored

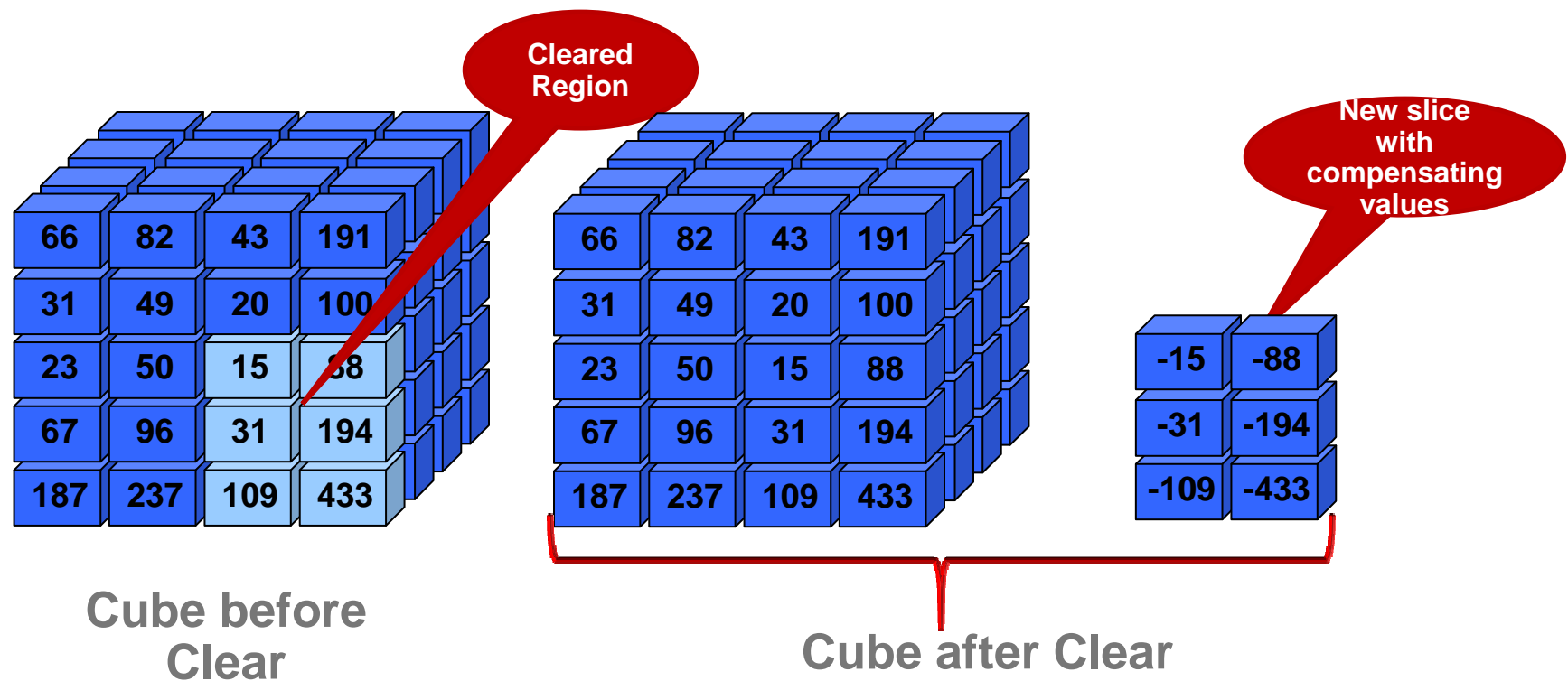
Partial Data Clear – Physical

- The PHYSICAL option completely removes cells in the specified region



Partial Data Clear - Logical

- Logically removes cells by creating compensating cells in a new slice





Data Clear - Performance

- Customer X Database

- Input data cells **64,253,181** (Load Time: 543 sec)
- Aggregate cells **13,675,311** (Aggregation Time: 356 sec)
- Data size **908**KB

Region definition {[Aug '05], [Days_From_Inventory_To_Sale]}

No. of cells in region **276,862**

Elapsed time for logical clear **13.64** sec

Elapsed time for physical clear **393.494** sec



ASO as target of a partition

- Current state
 - Full support for BSO partitioning
 - ASO can only be source of transparent partition
- New in Essbase 11.1.1
 - ASO as target of transparent partition
 - BSO can be used for complex calcs
 - ASO can be used for aggregation performance benefits



ASO as target of a partition

- Consolidate multiple cubes into target
- Target provides unified view into multiple source cubes
- Measures with different granularity
 - Overcomes limitation of write-back to upper levels
 - Cell can be leaf level (lev0) member in source, but non-leaf level in target

ASO as target of partition

Outline	Properties	Smartlist Manager	Modific
-	Outline: Company (Active Alias Table: Default)		
-	Year Time <4> (Label Only)		
+	Qtr1 (+) <3>		
+	Qtr2 (+) <3>		
+	Qtr3 (+) <3>		
+	Qtr4 (+) <3>		
-	Measures Accounts <3> (Label Only)		
+	Profit (+) <2>		
+	Inventory (~) <3> (Label Only)		
+	Ratios (~) <2> (Label Only)		
-	Product <5>		
+	100 (+) <3> (Alias: Colas)		
+	200 (+) <4> (Alias: Root Beer)		
+	300 (+) <3> (Alias: Cream Soda)		
+	400 (+) <3> (Alias: Fruit Soda)		
+	Diet (~) <3> (Alias: Diet Drinks)		
-	Market <4>		
+	East (+) <5> (UDAS: Major Market)		
+	West (+) <5>		
+	South (+) <4> (UDAS: Small Market)		
+	Central (+) <6> (UDAS: Major Market)		
-	Scenario <5> (Label Only)		
	Actual (+)		
	Corp_Budget (~)		
	Budget (~)		

BSO source

Outline	Properties	Query Hints	Smartlist Mana
-	Outline: Basic (Active Alias Table: Default)		
-	Year Time Stored # Default # <4>		
	Qtr1 (+)		
	Qtr2 (+)		
	Qtr3 (+)		
	Qtr4 (+)		
-	Measures Accounts Dynamic Compression <1>		
	Profit (+)		
-	Product Stored # Default # <1>		
	100 (+)		
-	Market Stored # Default # <1>		
	East (+)		
-	Scenario Stored # Default # <1>		
	Corp_Budget (+)		

ASO target



New calc script functions

- @LANCESTORS/ @LDESCENDANTS examples
 - @LDESCENDANTS(@LIST("100", "200", "300"), 0)
 - Returns all the descendents for the members “100”, “200” and “300”
 - @LDESCENDANTS(@LIST(@UDA(Market, "Major Market")), 0)
 - Returns all the descendents for the members(till level 0) in ‘Market’ dimension which are associated to attribute ‘Major Market’. The result set will have the descendants of “East” and “Central”
- CALC ALL EXCEPT MBR(@LDESCENDANTS(@LIST("100", "200")));
 - Calculate the entire database except for the descendants of the members “100” and “200” including the base members.”



New calc script functions - ShiftSibling

- @SHIFTSIBLING
 - Returns the nth previous member as a string.
 - Generate a member name string based on the relative position of the focus member.
- Syntax
 - @SHIFTSIBLING (mbrName, [N])
 - mbrName: Name of base member
 - N: Optional argument to specify by what position to shift the sibling in the outline order.
 - Values N can assume:
 - $N = 0$ the base member itself
 - $N < 0$ the previous sibling after N relative shift. If this shift goes beyond the left most member then return an empty string (“”)
 - $N > 0$ the next sibling after N relative shift. If this shift goes beyond the right most member an empty string “”
 - The default value of N is set to zero.



New calc functions

- For shifting one member
 - @PREVSIBLING(mbrName)
 - Returns the previous sibling for the input member. If the input member is the left most member then return “”; This is equivalent of calling @SHIFTSIBLING with -1 as the optional argument N
 - @NEXTSIBLING(mbrName)
 - Returns the next sibling for the input member. If the input member is the right most member then return “”. This is equivalent of calling @SHIFTSIBLING with 1 as the value for optional argument N.



Environment Variables in Calc scripts

- To use environment variables in a calc script, use a leading \$ sign:

```
DATAEXPORT "File" ", " $ENV_FILE;
```

- Note: \$ is reserved for environment variables.
 - If a member name begins with \$, enclose it in quotation marks.



New MDX Time Intelligence functions

- JulianDate - To the given Unix date, get its julian date.
- UnixDate - To the given julian date, get its Unix date.
- GetNextDay - To the given date and the week day, get the next date after input date that corresponds to the week day.
- GetFirstDay - For a given date_part, this function returns the first day of the time interval for the input date, following a standard Gregorian calendar.
- GetLastDay - For a given date_part, this function returns the last day of the time interval for the input date, following a standard Gregorian calendar.
- GetRoundDate - For a given date_part, this function returns the rounded date of the input date to the input time interval, following a standard Gregorian calendar.



New MDX function - LinkMember

- **LinkMember**
 - Returns a member's shared member along a given hierarchy
- **Syntax**
 - *Member.LinkMember(hierarchy)*
OR
 - *LinkMember (member, hierarchy)*
- **Enables ranking along shared level of alternate hierarchies – the general purpose function can be used in lot of other scenarios.**
- Available from 9.3.1.1



XOLAP

eXtending OLAP on Relational Database

- Cube that is dynamically sourced from RDBMS
- Application construction (Dimensional Modeling of Database tables/columns) with Essbase Studio
- Use with OLAP Aware tools – Reporting and Analysis
 - Office – Smart View
 - BI+ tools – Web Analysis / Financial Reports / OBI
 - Visual Explorer



XOLAP Functional Summary

- ASO-style application – aggregation then calculation
- Complete Outline built
 - no automatic refresh from dimension table changes
- Data retrieval by issuing SQL on demand
 - no caching (yet)
- Aggregate awareness – support for summary tables
- RDBMS friendly (read fewer/simpler) SQL queries
- “Hybrid” aggregation strategy
- Transparency of Access
 - query interfaces/calculations/partitions/Drill-thru



XOLAP removes pain points of Hybrid

- No restriction on types of formulas
- Efficient SQL
 - Metadata resolution does not generate SQL
 - Specific support for Keep-only, Remove-only types of operations
 - Heuristics drive generation of IN clause vs. filtering in Essbase
 - Multiple-query-aggregation levels handled by normalizing SQL to lowest query aggregation level
 - Other aggregations handled by Essbase
- Zoom-out zooms out to the right parent
- XOLAP can participate in partitions framework
- XOLAP models can be drill through enabled



XOLAP Restrictions

- No support new Essbase features directly on XOLAP partition (Varying Attributes/ Text list / Date-Time etc.)
- Attribute Dimensions not supported
- Densification for raggedness required to be handled at the source
- Write-back not supported
- Relies on database views for filters

Lifecycle Management

- Consistent, repeatable movement of apps, cubes, repositories or individual artifacts between dev, test, prod



- User interface & command line capabilities
- Auditing & application comparisons
- Available in next major release:
 - Essbase, HFM, Planning, EPMA, Calc Mgr, BI, Profitability Mgt, HPS, HSS (security, task flows, registration)
- LCM available with Shared Services

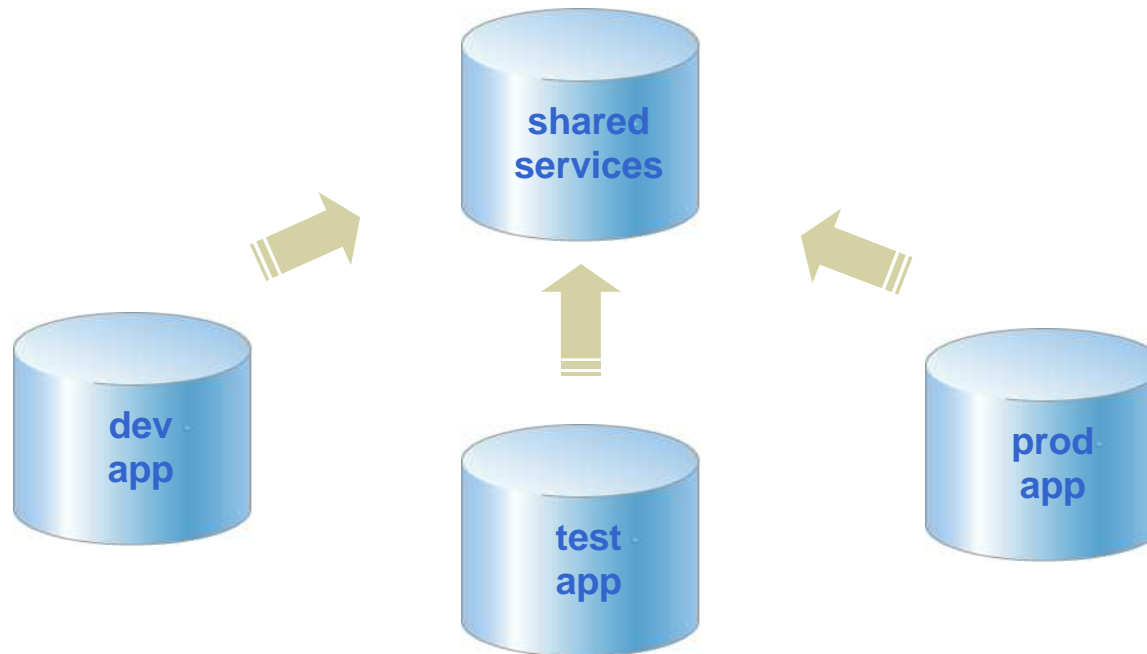


LCM Features

- Migration of entire app/repository or individual artifacts
- LCM security
 - LCM Admin role
- Browse applications and folders
- Search artifacts
- Compare applications and folders
- Export/Import HSS from/to local or server file system
- Save and load package file
- Audit report
- Migration status report

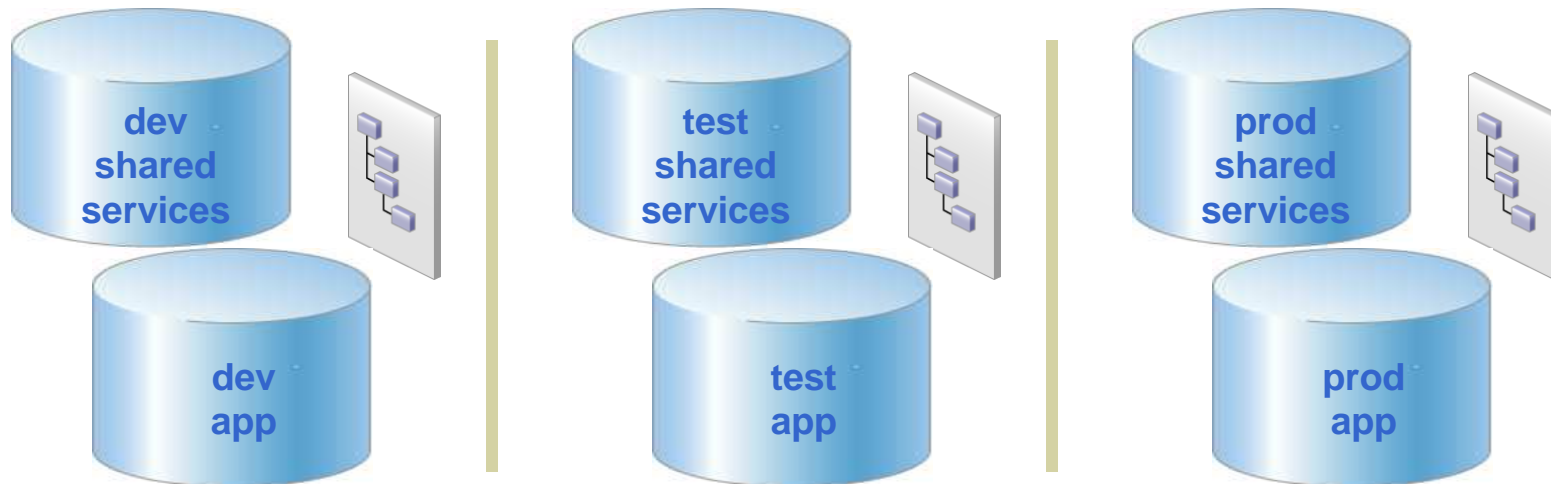
Supported environments

- Connected environments
 - Dev, test and prod environments are connected
- Connected environments utilize 1 Shared Services
- Migrations occur directly from one app to another



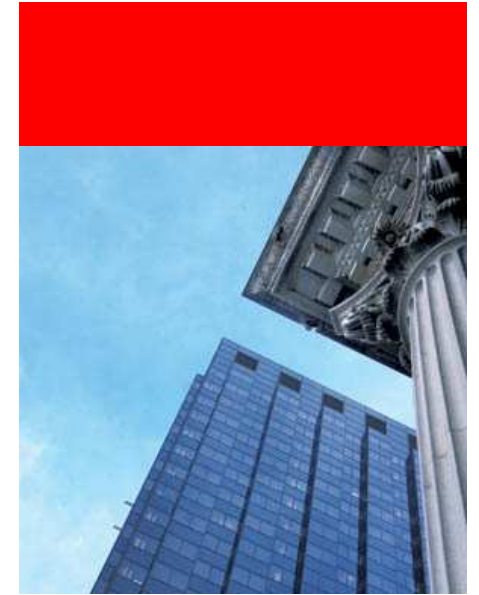
Supported environments

- Disconnected environments
 - Dev, test and prod environments are completely isolated
- Separate environments utilize separate Shared Services
- Migrations utilize the file system





EAS, EIS



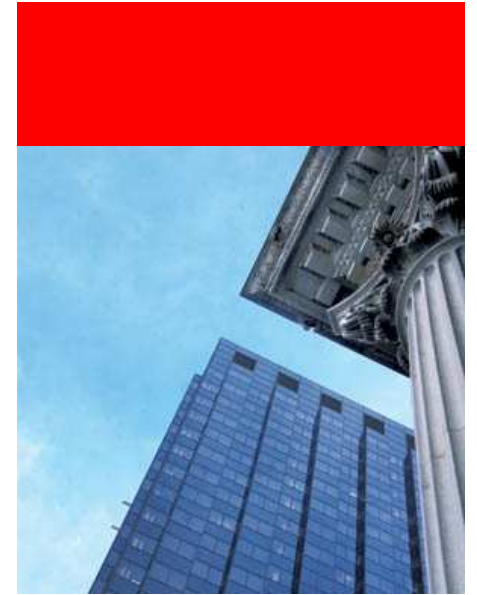


New Features exposed in EAS, EIS

- Varying Attributes
 - Manual Assignment (Studio for building from source)
- Text/Date Measures
- All other features except
 - XOLAP (requires Studio)
- EIS is updated to build existing cubes into Essbase 11.1.1.0
 - It is not enhanced to support new 11.1.1.0 Essbase features
 - Goal is to move to Studio

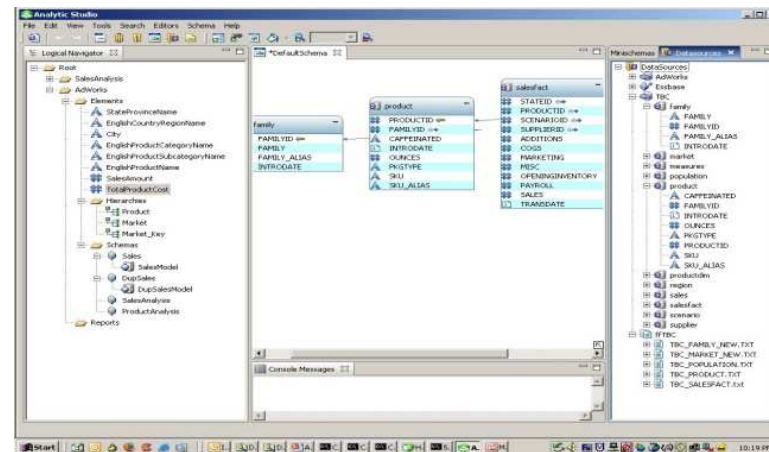


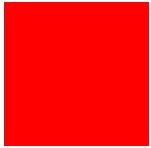
Essbase Studio



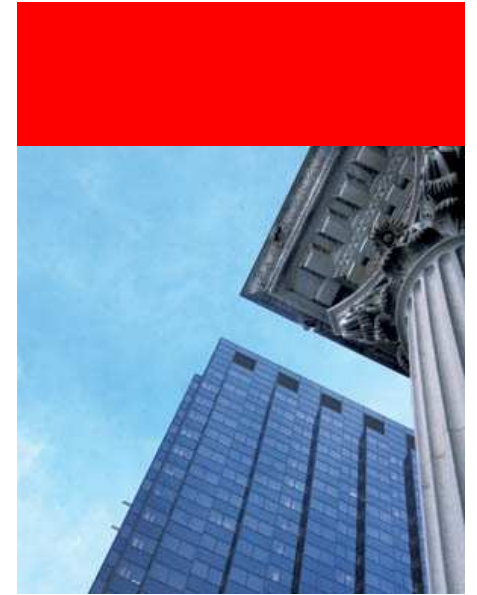
Essbase Studio

- Enhanced User Experience
 - Single Interface for cube design, deployment and administration
 - Managing deployment of Essbase applications
- Sources supported for modeling
 - Relational databases
 - OBI EE
 - Flat files
 - Dimension Server Library (EPMA)
- Support for Varying Attributes
- Support for new data types
 - Text measures
 - Date Measures
- Catalog browsing & exploring
 - High Usability and Reusability
- Lineage Analysis
- Drill through
 - Cell based
 - Member based
 - OBI EE, Java method, FDM, Essbase, URL, Relational database
- Role based security
 - Viewer, DSAdmin, DM and Admin
- Improvements in architecture
 - Parallel dataloads
 - Optimization for Teradata TPT API



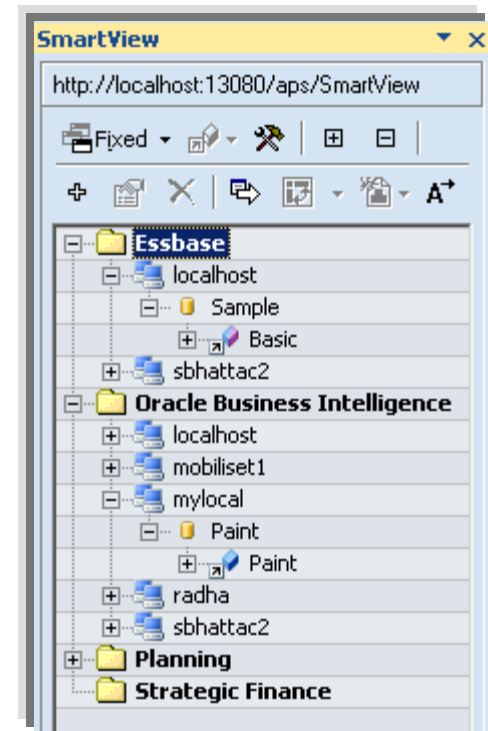


Smart View



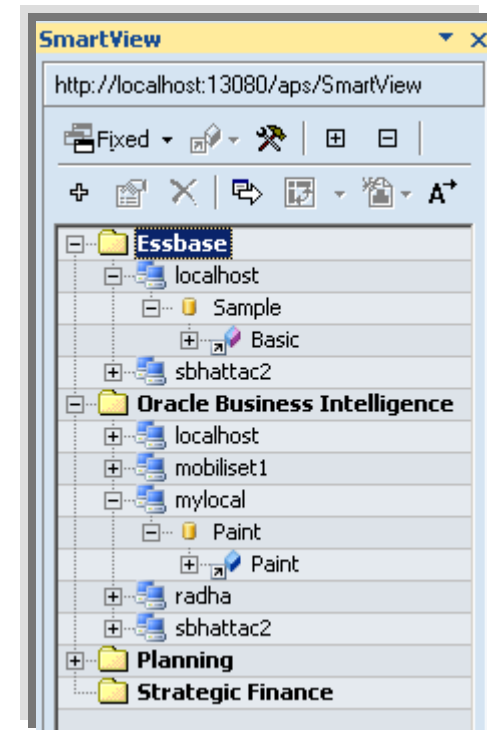
Connections

- Old Connection Manager Discontinued
- Part of Spreadsheet Real Estate
- Show/Hide Option



Connections (Contd.)

- Organized by Product Areas
- Central Definition - Admin
- Provision for Default
- Underlying URL:
`http://<host>:<port>/aps/SmartView`





Data Perspectives



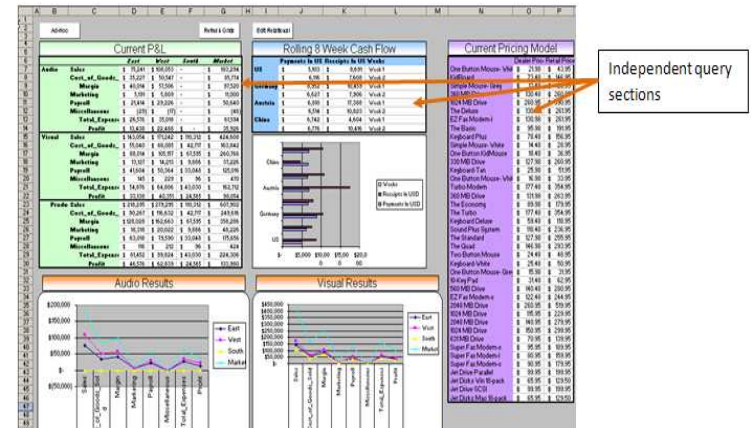
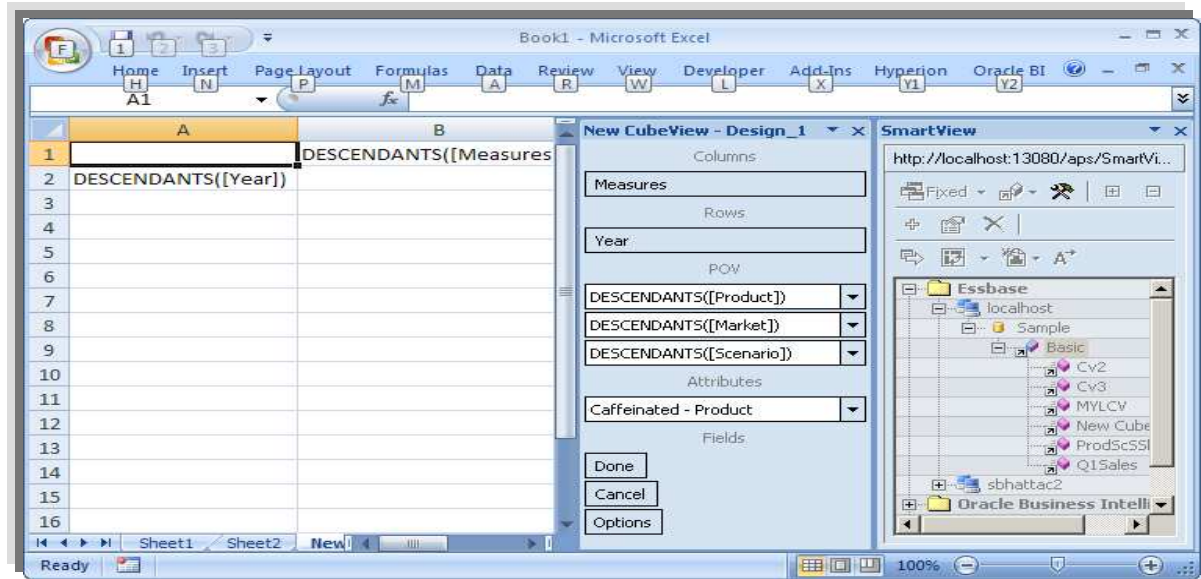


Getting Data...

- Typical end user navigates top down
 - Product Sales for All Regions
 - Show Data for Eastern Region
- Save format for Re-use
- Provide Query Capability Centrally
- Apply additional filters
 - Product Sales for East: Products 100 & 200 only

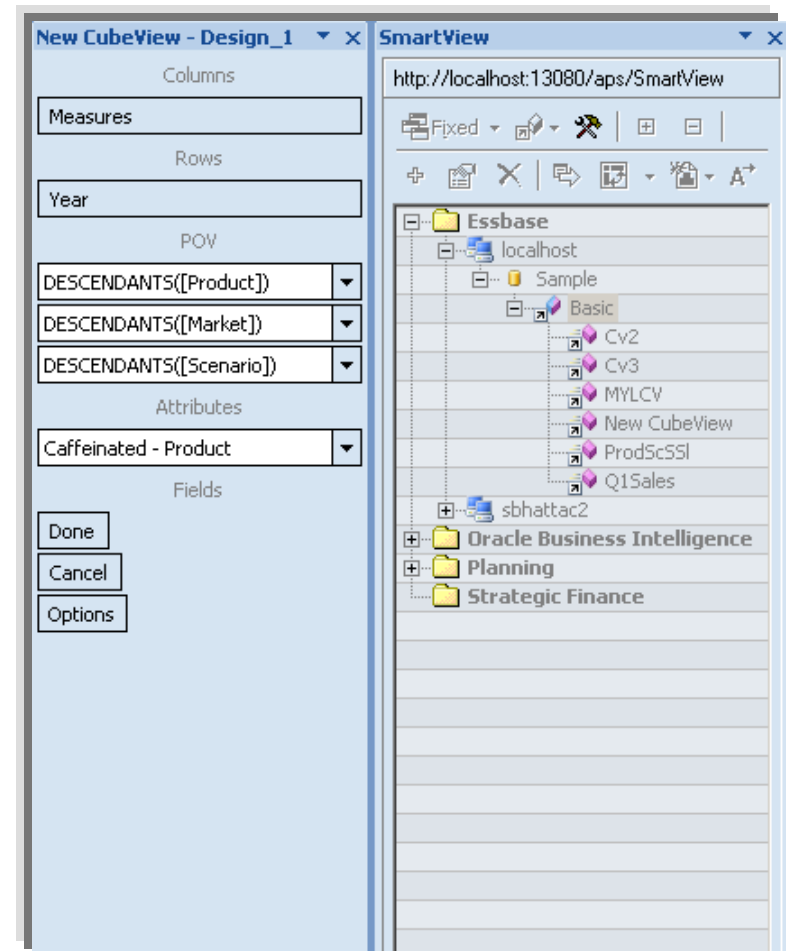
Personalized Office Analytics

- Database slices
 - User defined
 - Distributable
- Default:
 - Queries
 - POV
 - User options
- Filtered database views:
 - For example only see 4 dimensions of 12 dimensional model
 - Anchor other dimensions



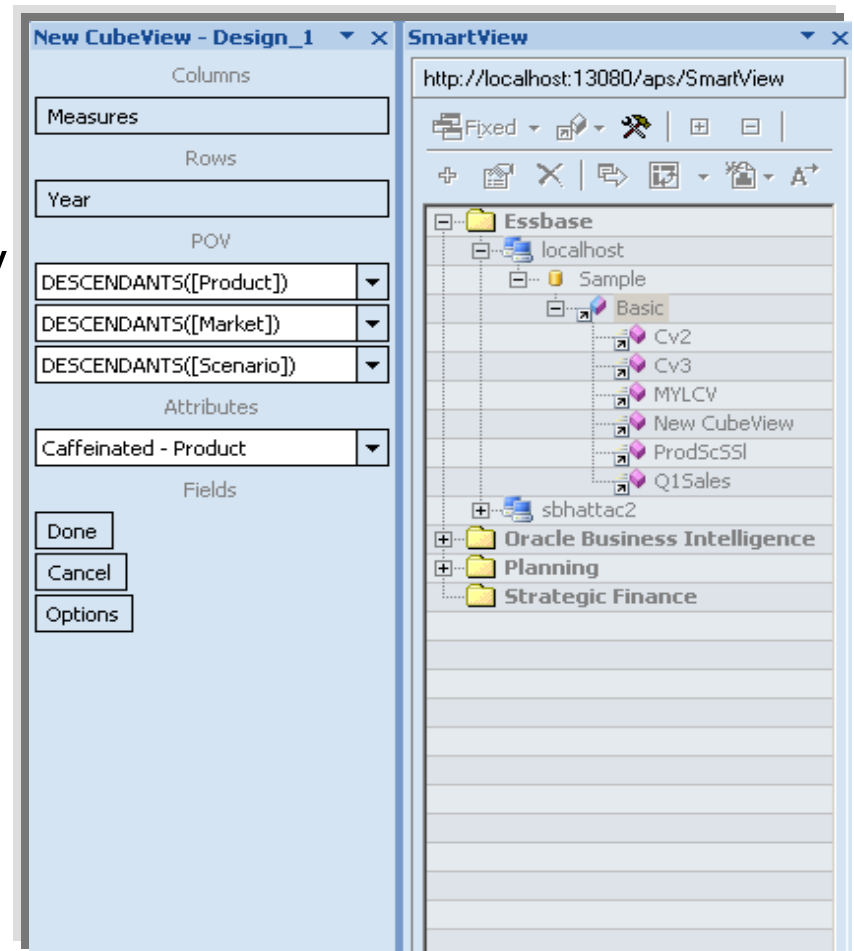
Smart Slice

- Unexpanded member filters
 - Children
 - Descendants
 - Etc
- Specific options
 - Suppression
 - Zoom
 - Depth
 - etc



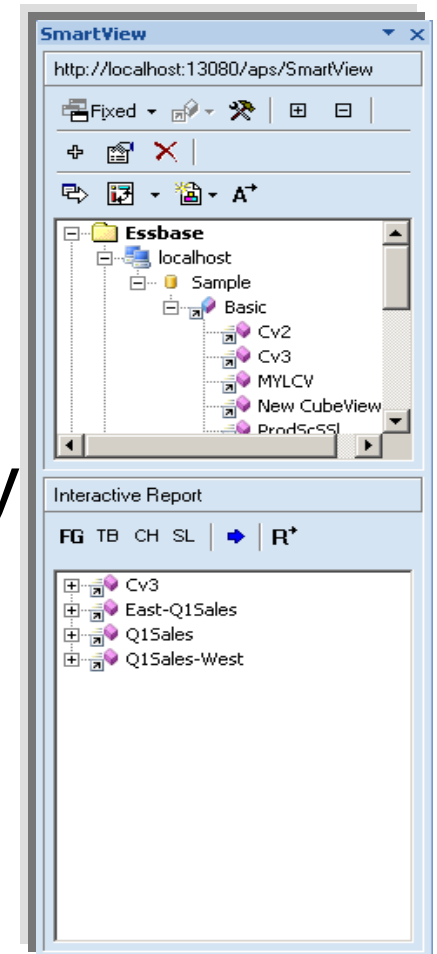
Smart Slice Cont.

- Creation ability secured
 - Set per database by admin
 - Longer term personal repository
- Define in Excel
- Leverage across Office
- Confined ad-hoc access
- Required to leverage Report Designer



Query

- Based on Smart Slice
 - e.g. Sales for Region West
- Pre-cursor to Report Design
- Report Objects associate to Query





Sub-Query

- Local filter
 - e.g. Sales for Region East: for Products 100 & 200
- Ability to associate Report Objects
- Multiple Report Objects linked to Single Query

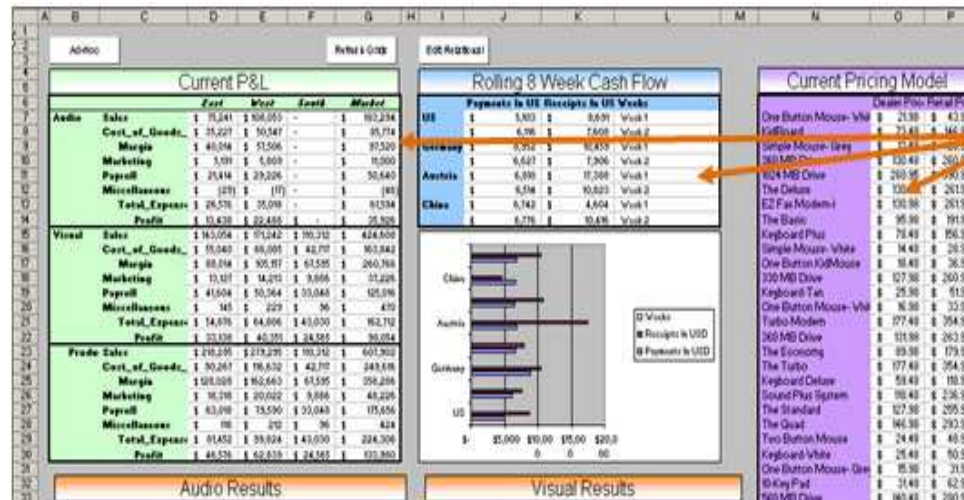


Report Designer

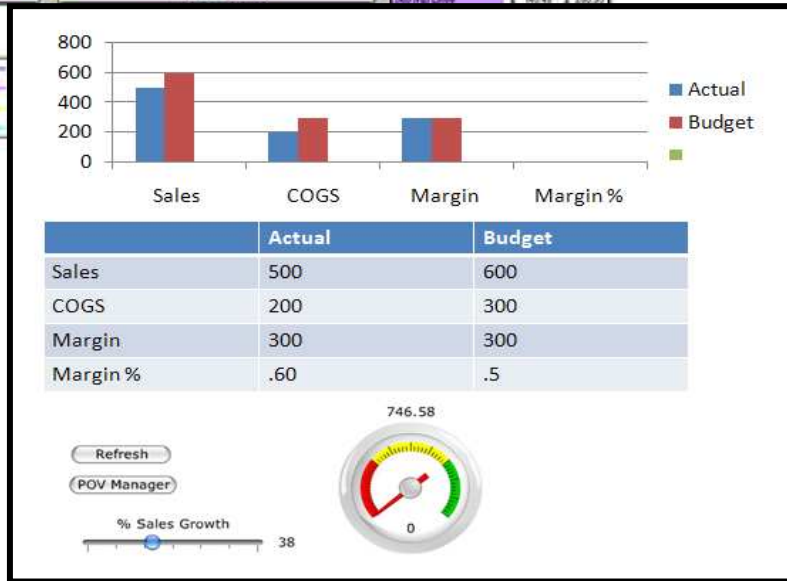
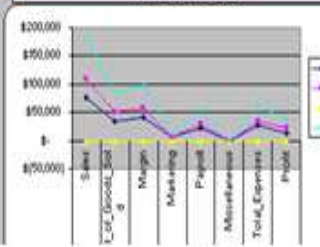


Report Designer

- Data Integration
- Stylized Output:
 - Formats
 - Tables
 - Charts
 - Formulae
- Linked POV
- Cascade Output
- Word and PPT Table/Report Authoring
- Report Controls

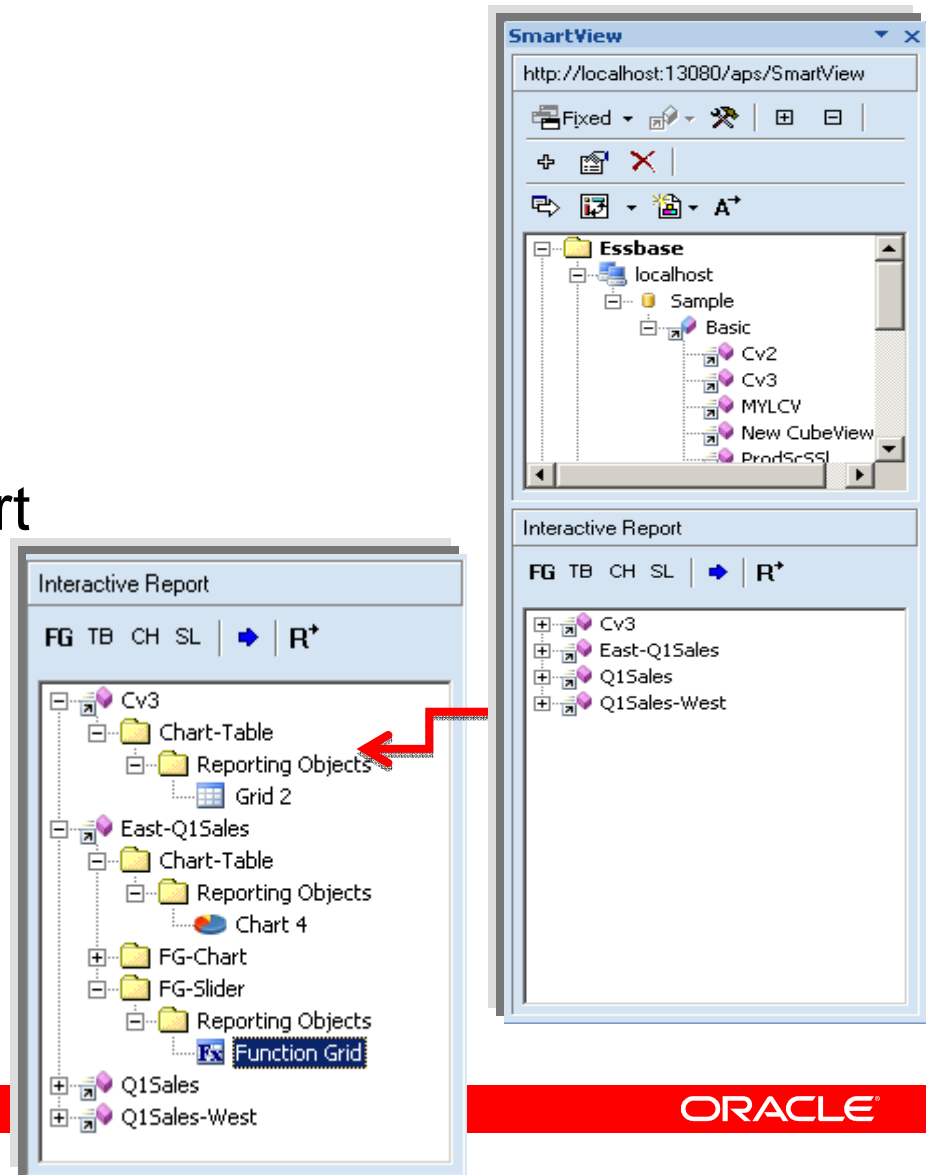


Independent query sections



Report Designer

- Workbook as a report
 - One or more Smart Slices
 - Multiple data sources
 - Object based display of Smart Slices
- Can mix ad-hoc and report
- Display by view or sheet
- VBA capable
- Linked POV across same source
- Leverage design mode





Report Controls

- Native to Office
- VB controls
- Work on Smart Slice
- Chart – Chart control, not the same as Office 2007 charts
- Slider – Office control, allows multiple members from a dimension to filter grid or chart
- Flex Grid – Scrollable grid based control, fixed headers, zoom, and pivot
- Table – Drill, Scroll Bar



Report Controls Cont.

- Drop-down list – list control that contains multiple members from a dimension to filter grid or chart
- POV – POV control that lets user change POV on grid
- Refresh/Submit button – Control that lets you refresh or submit a given sheet or subsection of a sheet



Essbase Enhancements

- Smart Slice modeling
- Essbase Studio drill-through
 - Display in pop-up
 - Format
 - Launch:
 - URL (in browser window)
 - Relational report
 - Java method
- Varying attribute support
- Textual data support
 - Drop-down list in Excel

Drill Through Reports

Custom color coding indicating member cells have a drill through report associated

Custom color coding indicating data cells have a drill through report associated

	A	B	C	D	E	F	G	H	I	J	K
1		100	200	300	400	Product					
2	East	70862	67994	53475	44194	236525					
3	West	94353	94724	93903	86916	369896					
4	South	53016	55130	34126	#Missing	142266					
5	Central	96001	91878	8807							
6	Market	314232	309726	2695							
7											
8											
9											

Tool tip showing the various reports applicable at the context of the cell. Dynamically generated tool tip



Essbase 11.1.1 Key Features Summary

- EPM Initiatives
 - Shared Services Security
 - Shared Services is now Default
 - Security Import/Export
 - Remove OpenLDAP Dependency
 - Lifecycle Management
 - Expanded Smart Search capabilities
- General Essbase Features
 - Essbase Studio
 - Textual/ Date Measures Support
 - Common installer
 - Enhanced Cancellation
 - Data load
 - Maxl, MDX, Calc and report scripts execution
- Block Storage Specifics
 - Time Intelligence enhancements
 - Calc script functions
 - Time Dimension Wizard
 - Transaction logging, backup and recovery
- Aggregate Storage Specifics
 - HOLAP/ROLAP optimizations (XOLAP)
 - Parallel Streaming loads from SQL
 - Varying Attributes
 - Target of a Transparent Partition
 - Target of a Replicated Partition
 - Unicode